

PRODUCT MONOGRAPH  
INCLUDING PATIENT MEDICATION INFORMATION

Pr**BEOVU**®

brolocizumab injection

Single-use pre-filled syringes  
Single-use vials

6 mg / 0.05 mL solution for intravitreal injection

Ophthalmological / Antineovascularisation agent

ATC Code: S01LA06

Novartis Pharmaceuticals Canada Inc.  
385 Bouchard Blvd.  
Dorval, Quebec  
H9S 1A9

Date of Initial Approval:  
March 12, 2020

Submission Control No: 226224

BEOVU is a registered trademark

## TABLE OF CONTENTS

<b>TABLE OF CONTENTS .....</b>	<b>2</b>
<b>PART I: HEALTH PROFESSIONAL INFORMATION.....</b>	<b>4</b>
<b>1 INDICATIONS.....</b>	<b>4</b>
1.1 Pediatrics.....	4
1.2 Geriatrics.....	4
<b>2 CONTRAINDICATIONS .....</b>	<b>4</b>
<b>3 DOSAGE AND ADMINISTRATION.....</b>	<b>4</b>
3.1 Dosing Considerations .....	4
3.2 Recommended Dose and Dosage Adjustment .....	4
3.3 Administration.....	5
3.4 Missed Dose.....	10
<b>4 OVERDOSAGE .....</b>	<b>10</b>
<b>5 DOSAGE FORMS, STRENGTHS, COMPOSITION AND PACKAGING .....</b>	<b>10</b>
<b>6 DESCRIPTION.....</b>	<b>10</b>
<b>7 WARNINGS AND PRECAUTIONS .....</b>	<b>11</b>
7.1 Special Populations .....	12
7.1.1 Pregnant Women .....	12
7.1.2 Breast-feeding .....	12
7.1.3 Pediatrics .....	12
7.1.4 Geriatrics .....	12
<b>8 ADVERSE REACTIONS.....</b>	<b>13</b>
8.1 Adverse Reaction Overview .....	13
8.2 Clinical Trial Adverse Reactions.....	13
8.3 Less Common Clinical Trial Adverse Reactions .....	15
8.4 Abnormal Laboratory Findings: Hematologic, Clinical Chemistry and Other Quantitative Data .....	15
<b>9 DRUG INTERACTIONS.....</b>	<b>15</b>
<b>10 ACTION AND CLINICAL PHARMACOLOGY.....</b>	<b>15</b>
10.1 Mechanism of Action .....	15
10.2 Pharmacodynamics .....	15
10.3 Pharmacokinetics .....	16
<b>11 STORAGE, STABILITY AND DISPOSAL.....</b>	<b>16</b>
<b>12 SPECIAL HANDLING INSTRUCTIONS.....</b>	<b>17</b>
<b>PART II: SCIENTIFIC INFORMATION.....</b>	<b>18</b>
<b>13 PHARMACEUTICAL INFORMATION .....</b>	<b>18</b>
<b>14 CLINICAL TRIALS .....</b>	<b>18</b>
14.1 Trial Design and Study Demographics .....	18
14.2 Study Results.....	20
<b>15 NON-CLINICAL TOXICOLOGY .....</b>	<b>22</b>



## PART I: HEALTH PROFESSIONAL INFORMATION

### 1 INDICATIONS

BEOVU® (brolucizumab) is indicated for the treatment of neovascular (wet) age-related macular degeneration (AMD).

#### 1.1 Pediatrics

**Pediatrics (< 18 years of age):** No data are available to Health Canada; therefore, Health Canada has not authorized an indication for pediatric use.

#### 1.2 Geriatrics

**Geriatrics (≥ 65 years of age):** No dosage regimen adjustment is required for geriatric use (see 3.2 Special populations).

### 2 CONTRAINDICATIONS

- Patients with hypersensitivity to this drug or to any ingredient in the formulation, including any non-medicinal ingredient, or component of the container. For a complete listing, see DOSAGE FORMS, STRENGTHS, COMPOSITION AND PACKAGING.
- Patients with active or suspected ocular or periocular infection.
- Patients with active intraocular inflammation.

### 3 DOSAGE AND ADMINISTRATION

#### 3.1 Dosing Considerations

- **Single-use** pre-filled syringe or **single-use** vial\* for intravitreal injection only.
- Each pre-filled syringe or vial should only be used for the treatment of a single eye.
- BEOVU must be administered by a qualified physician experienced in administering intravitreal injections.
- The safety and efficacy of BEOVU administered in both eyes concurrently have not been studied.

\*single-use vial not available in Canada

#### 3.2 Recommended Dose and Dosage Adjustment

##### Treatment of wet AMD

The recommended dose for BEOVU is 6 mg (0.05 mL) administered by intravitreal injection every 4 weeks (monthly) for the first three doses. Thereafter, the physician may individualize treatment intervals based on disease activity as assessed by visual acuity and/or anatomical parameters. A disease activity assessment is suggested 16 weeks (4 months) after treatment start and assessed regularly after that. In patients without disease activity, treatment up to every 12 weeks (3 months) could be considered. In patients with disease activity, treatment every 8

weeks (2 months) could be considered (see CLINICAL TRIALS).

### **Special populations**

#### Renal impairment

(see ACTION AND CLINICAL PHARMACOLOGY).

#### Hepatic impairment

Brolucizumab has not been studied in patients with hepatic impairment (see ACTION AND CLINICAL PHARMACOLOGY).

#### Pediatric patients (below 18 years)

The safety and efficacy of BEOVU in pediatric patients have not been established. No data are available to Health Canada.

#### Geriatrics (65 years or above)

In the HAWK and HARRIER clinical studies, approximately 90% (978/1088) of patients randomized to treatment with BEOVU were  $\geq 65$  years of age and approximately 60% (648/1088) were  $\geq 75$  years of age. No dosage regimen adjustment is required for geriatric use (see ACTION AND CLINICAL PHARMACOLOGY).

### **3.3 Administration**

As with all medicinal products for intravitreal use, BEOVU should be inspected visually prior to administration (see SPECIAL HANDLING INSTRUCTIONS).

The injection procedure must be carried out under aseptic conditions, which include the use of surgical hand disinfection, sterile gloves, a sterile drape and a sterile eyelid speculum (or equivalent). Sterile paracentesis equipment should be available as a precautionary measure. Adequate anesthesia and a broad-spectrum topical microbicide to disinfect the periocular skin, eyelid and ocular surface should be administered prior to the injection.

Patient's medical history for hypersensitivity reactions should be carefully evaluated prior to performing the intravitreal procedure (see CONTRAINDICATIONS).

Immediately following the intravitreal injection, patients should be monitored for elevation in intraocular pressure. Appropriate monitoring may consist of a check for perfusion of the optic nerve head or tonometry.

Following intravitreal injection, patients should be instructed to report any symptoms suggestive of endophthalmitis, retinal detachment or tear, cataract or increased intraocular pressure (e.g. eye pain, redness of the eye, photophobia, blurring of vision) without delay.

For information on preparation of BEOVU, see Instructions for use below.

The injection needle should be inserted 3.5 to 4.0 mm posterior to the limbus into the vitreous cavity, avoiding the horizontal meridian and aiming towards the center of the globe. The injection volume of 0.05 mL is then delivered slowly; a different scleral site should be used for subsequent injections.

## Instruction for use of the BEOVU pre-filled syringe

### Storage and inspection



Store BEOVU in the refrigerator (2°C to 8°C). Do not freeze. Keep the pre-filled syringe in its sealed blister and the outer carton in order to protect from light.



Prior to use, the unopened blister with pre-filled syringe of BEOVU may be kept at room temperature (below 25°C) for up to 24 hours. Make sure that your pack contains a sterile pre-filled syringe in a sealed blister. After opening the blister pack, proceed under aseptic conditions.



BEOVU is a clear to slightly opalescent and colorless to slightly brownish-yellow aqueous solution.



The solution should be inspected visually upon removal from the refrigerator and prior to administration. If particulates or cloudiness are visible, the pre-filled syringe must not be used and appropriate replacement procedures followed.

The pre-filled syringe is sterile and for single-use only. Do not use if the packaging, or pre-filled syringe are damaged or expired.

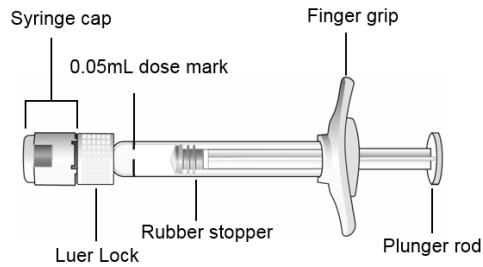
### How to prepare and administer BEOVU

The intravitreal injection procedure must be carried out under aseptic conditions, which includes the use of surgical hand disinfection, sterile gloves, a sterile drape, a sterile eyelid speculum (or equivalent), and the availability of sterile paracentesis equipment (if required). Adequate anesthesia and a broad-spectrum topical microbicide to disinfect the periocular skin, eyelid and ocular surface should be administered prior to the injection.

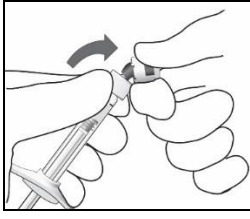
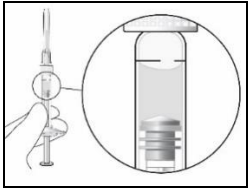
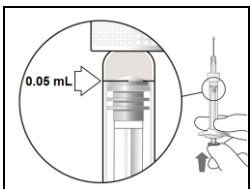
For intravitreal injection, use a 30G x ½ inch sterile injection needle. The injection needle is not included in the BEOVU pack.

**Note: The dose must be set to 0.05 mL.** Since the volume contained in the pre-filled syringe (0.165 mL) is greater than the recommended dose (0.05 mL), a portion of the volume contained in the pre-filled syringe must be discarded prior to administration. Injecting the entire volume in the pre-filled syringe could result in overdose.

Ensure that the injection is given immediately after preparation of the dose (Step 5).



### Injection procedure

1		Peel the lid off the syringe tray and, using aseptic technique, remove the syringe.
2		Snap off (do not turn or twist) the syringe cap.
3		Aseptically and firmly assemble a 30G x 1/2" injection needle onto the syringe.
4		To check for air bubbles, hold the syringe with the needle pointing up. If there are any air bubbles, gently tap the syringe with your finger until the bubbles rise to the top. Carefully remove the needle cap by pulling it straight off.
5		Hold the syringe at eye level and carefully push the plunger until the edge below the dome of the rubber stopper is aligned with the <b>0.05 mL</b> dose mark. The syringe is ready for the injection.
6		Inject slowly until the rubber stopper reaches the end of the syringe to deliver the volume of 0.05 mL. Confirm delivery of the full dose by checking that the rubber stopper has reached the end of the syringe barrel.  <b>Note:</b> Any unused medicinal product or waste material should be disposed of in accordance with local regulations.

### Commonly asked questions and answers

**Q: What if I cannot remove all the air bubbles from the liquid?**

A: It is important that the liquid is air free. However, tiny air bubbles that are attached to the stopper usually do not detach from the stopper during the injection and therefore do not affect the dose volume.

### Instruction for use of the BEOVU vial kit\*

#### Storage and inspection



Store BEOVU in the refrigerator (2°C to 8°C). Do not freeze. Keep the vial in the outer carton in order to protect from light.



Prior to use, the unopened vial of BEOVU may be kept at room temperature (below 25°C) for up to 24 hours. After opening the vial, proceed under aseptic conditions.



BEOVU is a clear to slightly opalescent and colorless to slightly brownish-yellow aqueous solution.



The solution should be inspected visually upon removal from the refrigerator and prior to administration. If particulates or cloudiness are visible, the vial must not be used and appropriate replacement procedures followed.

The contents of the vial and filter needle are sterile and for single-use only. Do not use if the packaging, vial and/or filter needle are damaged or expired.

#### How to prepare and administer BEOVU

The intravitreal injection procedure must be carried out under aseptic conditions, which includes the use of surgical hand disinfection, sterile gloves, a sterile drape and a sterile eyelid speculum (or equivalent) and the availability of sterile paracentesis equipment (if required). Adequate anesthesia and a broad-spectrum topical microbicide to disinfect the periorcular skin, eyelid and ocular surface should be administered prior to the injection.

For preparation and intravitreal injection the following single use medical devices are needed:

- A sterile 30G x ½" injection needle
- A sterile 1 mL syringe with a 0.05 mL dose mark
- A sterile 5 µm blunt filter needle (18G x 1½", 1.2 mm x 40 mm)

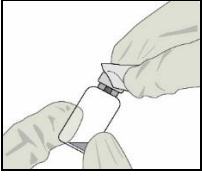
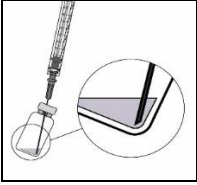
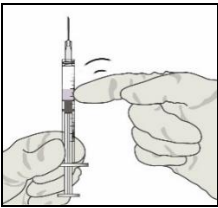
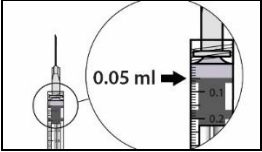
The injection needle and the syringe are not included in the BEOVU vial kit.

**Note: The dose must be set to 0.05 mL.** Since the volume contained in the vial (0.23 mL) is greater than the recommended dose (0.05 mL), a portion of the volume contained in the vial must be discarded prior to administration. Injecting the entire volume in the vial could result in overdose.

Ensure that the injection is given immediately after preparation of the dose (Step 8).



## Injection procedure

1		<p>Remove the vial cap and clean the vial septum (e.g. with 70% alcohol swab).</p>
2		<p>Assemble the filter needle onto a 1 mL syringe using aseptic technique.</p>
3		<p>Push the filter needle into the center of the vial septum until the needle touches the bottom of the vial.</p>
4		<p>To withdraw the liquid, hold the vial slightly inclined and slowly withdraw all the liquid from the vial and filter needle. Ensure that the plunger rod is drawn sufficiently back when emptying the vial in order to completely empty the filter needle.</p>
5		<p>Disconnect the filter needle from the syringe in an aseptic manner and dispose of it.</p> <p><b>The filter needle is not to be used for intravitreal injection.</b></p>
6		<p>Aseptically and firmly assemble a 30G x ½" injection needle onto the syringe.</p>
7		<p>To check for air bubbles, hold the syringe with the needle pointing up. If there are any air bubbles, gently tap the syringe with your finger until the bubbles rise to the top.</p>
8		<p>Hold the syringe at eye level and carefully expel the air from the syringe and adjust the dose to the <b>0.05 mL</b> mark. The syringe is ready for the injection.</p>
9		<p>Inject slowly until the rubber stopper reaches the end of the syringe to deliver the volume of 0.05 mL. Confirm delivery of the full dose by checking that the rubber stopper has reached the end of the syringe barrel.</p> <p><b>Note:</b> Any unused medicinal product or waste material should be disposed of in accordance with local regulations.</p>

## Commonly asked questions and answers

**Q: What if I have difficulty withdrawing sufficient liquid from the vial?**

A: Do not shake the vial before withdrawal but let the liquid settle to the bottom of the vial. Ensure the vial is in an upright, slightly inclined position. **Slowly withdraw** the plunger and wait for the liquid to appear in the syringe barrel. Continue to withdraw slowly to completely empty the vial and the filter needle.

**Q: What if I cannot remove all the air bubbles from the liquid?**

A: It is important that the liquid is air free. However, tiny air bubbles that are attached to the stopper usually do not detach from the stopper during the injection and therefore do not affect the dose volume.

\*single-use vial not available in Canada

**3.4 Missed Dose**

If a planned injection of BEOVU is missed, reset a new appointment for an injection as soon as possible. Reset the dose schedule to administer the next sequential dose after the missed dose is administered.

**4 OVERDOSAGE**

Overdosing with greater than recommended injection volume may increase intraocular pressure. Therefore, in case of overdose, intraocular pressure should be monitored and if deemed necessary by the treating physician, appropriate treatment should be initiated.

For management of a suspected drug overdose, contact your regional poison control centre.

**5 DOSAGE FORMS, STRENGTHS, COMPOSITION AND PACKAGING**

**Table 1 - Dosage Forms, Strengths, Composition and Packaging**

<b>Route of Administration</b>	<b>Dosage Form / Strength/Composition</b>	<b>Non-medicinal Ingredients</b>
Intravitreal injection	Solution / 6 mg / 0.05 mL	polysorbate 80, sodium citrate, sucrose, water for injection

**6 DESCRIPTION**

BEOVU is supplied in a single-use pre-filled syringe or in a single-use vial\*.

One mL solution for injection contains 120 mg of brolocizumab.

**Pre-filled syringe**

Sterile, clear to slightly opalescent, colorless to slightly brownish-yellow and preservative-free aqueous solution.

Each pre-filled syringe contains 19.8 mg of brolocizumab in 0.165 mL solution. This provides a usable amount to deliver a single dose of 0.05 mL containing 6 mg of brolocizumab.

#### **Vial\***

Sterile, clear to slightly opalescent, colorless to slightly brownish-yellow and preservative-free aqueous solution.

Each vial contains 27.6 mg of brolocizumab in 0.23 mL solution. This provides a usable amount to deliver a single dose of 0.05 mL containing 6 mg of brolocizumab.

\*single-use vial not available in Canada

## **7 WARNINGS AND PRECAUTIONS**

### **Cardiovascular**

#### ***Thromboembolic Events***

Arterial thromboembolic events (ATEs) are adverse events potentially related to systemic VEGF inhibition. There is a potential risk of ATEs following intravitreal use of VEGF inhibitors, including BEOVU (see ADVERSE REACTIONS). ATEs are defined as nonfatal stroke, nonfatal myocardial infarction, or vascular death (including deaths of unknown cause).

#### **Driving and Operating Machinery**

Patients may experience temporary visual disturbances after an intravitreal injection with BEOVU and the associated eye examination, and should therefore be advised not to drive or use machinery until visual function has recovered sufficiently.

#### **Hypersensitivity**

As with all therapeutic proteins, there is a theoretical risk of hypersensitivity reactions including anaphylaxis. Hypersensitivity reactions may manifest as rash, pruritus, urticaria, erythema, severe anaphylactic/anaphylactoid reactions or severe intraocular inflammation. Patients should be instructed to report any symptoms of anaphylaxis, allergic reactions or intraocular inflammation (e.g., redness of the eye, eye pain, photophobia, etc.).

#### **Ophthalmologic**

#### ***Intravitreal injection-related reactions: Endophthalmitis, Retinal detachment/tear and Traumatic cataract***

Intravitreal injections, including those with BEOVU, have been associated with endophthalmitis, retinal detachment, retinal tear and traumatic cataract (see ADVERSE REACTIONS). Proper aseptic injection techniques must always be used when administering BEOVU. Patients should be instructed to report any symptoms suggestive of the above mentioned events without delay and should be managed appropriately.

### ***Increase in Intraocular Pressure***

Transient increases in intraocular pressure have been seen within 30 minutes of intravitreal injection with VEGF inhibitors, including BEOVU. Sustained intraocular pressure increases have also been reported (see ADVERSE REACTIONS). Both intraocular pressure and perfusion of the optic nerve head must be monitored and managed appropriately.

BEOVU has not been studied in patients with poorly controlled glaucoma. Do not inject BEOVU while the intraocular pressure is  $\geq 30$  mmHg.

### **Sexual Health**

#### ***Reproduction***

Women of reproductive potential should use effective contraception (methods that result in less than 1 % pregnancy rates) during treatment with BEOVU and for at least one month after the last dose when stopping treatment with BEOVU.

#### ***Fertility***

VEGF inhibition has been shown to affect follicular development, corpus luteum function, and fertility. Based on the mechanism of action of VEGF inhibitors, there is a potential risk to female reproduction and to embryo-fetal development.

### **7.1 Special Populations**

#### **7.1.1 Pregnant Women**

There are no adequate and well-controlled studies of BEOVU administration in pregnant women. The potential risk of use of BEOVU in pregnancy is unknown. However, based on the anti-VEGF mechanism of action, brolocizumab must be regarded as potentially teratogenic and embryo-/fetotoxic. Therefore, BEOVU should not be used during pregnancy unless the potential benefits outweigh the potential risks to the fetus.

#### **7.1.2 Breast-feeding**

It is unknown if brolocizumab is transferred into human milk after administration of BEOVU. There are no data on the effects of BEOVU on the breastfed child or on milk production. Because of the potential for adverse drug reactions in the breastfed child, breastfeeding is not recommended during treatment with BEOVU and for at least one month after the last dose when stopping treatment with BEOVU.

#### **7.1.3 Pediatrics**

**Pediatrics (< 18 years of age):** No data are available to Health Canada; therefore, Health Canada has not authorized an indication for pediatric use.

#### **7.1.4 Geriatrics**

**Geriatrics ( $\geq 65$  years of age):** (see 3.2 Special populations and ACTION AND CLINICAL PHARMACOLOGY).

## 8 ADVERSE REACTIONS

### 8.1 Adverse Reaction Overview

A total of 1088 patients treated with BEOVU constituted the safety population in the two Phase III studies HAWK and HARRIER with a cumulative 96 weeks exposure to BEOVU and 730 patients treated with the recommended dose of 6 mg.

The most frequently reported adverse drug reactions in >5% of patients treated with BEOVU 6 mg were visual acuity reduced (7%), cataract (7%), conjunctival haemorrhage (6%), vitreous floaters (5%) and eye pain (5%).

Less common serious adverse drug reactions reported in <1% of the patients treated with BEOVU 6 mg were endophthalmitis, blindness, retinal artery occlusion, and retinal detachment.

The most frequently reported adverse drug reactions resulting in permanent discontinuation of BEOVU treatment were endophthalmitis, uveitis and retinal artery occlusion.

### 8.2 Clinical Trial Adverse Reactions

Because clinical trials are conducted under very specific conditions, the adverse reaction rates observed in the clinical trials may not reflect the rates observed in practice and should not be compared to the rates in the clinical trials of another drug. Adverse reaction information from clinical trials is useful for identifying drug-related adverse events and for approximating rates.

Table 2 lists adverse reactions reported in the HAWK and HARRIER studies that occurred in greater than or equal to 1% of patients.

#### **Table 2 - Common Adverse Drug Reactions ( $\geq 1\%$ ) in HAWK and HARRIER wet AMD studies**

Primary System Organ Class Preferred Term	BEOVU (N=730)	Aflibercept (N=729)
<b>Eye disorders</b>		
Visual acuity reduced	7%	8%
Cataract	7%	11%
Conjunctival haemorrhage	6%	7%
Vitreous floaters	5%	3%
Eye pain	5%	6%
Intraocular inflammation <sup>a)</sup>	4%	1%
Retinal haemorrhage	4%	3%
Vitreous detachment	4%	3%
Intraocular pressure increase	4%	5%
Conjunctivitis	3%	2%
Retinal pigment epithelial tear	3%	1%
Vision blurred	2%	2%
Corneal abrasion	2%	2%
Retinal tear	1%	1%
Punctate keratitis	1%	2%
Conjunctival hyperaemia	1%	1%
Lacrimation increased	1%	1%
Abnormal sensation in eye	1%	2%
Blindness	1%	0%
Retinal artery occlusion	1%	0%
Endophthalmitis	1%	0%
Retinal detachment	1%	0%
Detachment of retinal pigment epithelium	1%	0%
<b>Immune system disorders</b>		
Hypersensitivity <sup>b)</sup>	2%	1%

<sup>a)</sup> Including anterior chamber cell, anterior chamber flare, anterior chamber inflammation, chorioretinitis, eye inflammation, iridocyclitis, iritis, uveitis, vitreous haze, vitritis.

<sup>b)</sup> Including urticaria, rash, pruritus, erythema

### Arterial thromboembolic events (ATEs)

The ATE rate in HAWK and HARRIER studies during the 96-weeks was 4.5% (33 of 730) in the pooled BEOVU arms compared with 4.7% (34 of 729) in the pooled aflibercept arms.

### Immunogenicity

As with all therapeutic proteins, there is a potential for an immune response in patients treated with BEOVU. The immunogenicity of BEOVU was evaluated in serum samples. The immunogenicity data reflect the percentage of patients whose test results were considered positive for antibodies to BEOVU in immunoassays. The detection of an immune response is highly dependent on the sensitivity and specificity of the assays used, sample handling, timing of sample collection, concomitant medications, and underlying disease. For these reasons, comparison of the incidence of antibodies to BEOVU with the incidence of antibodies to other products may be misleading.

Anti-brolucizumab antibodies were detected in the pre-treatment sample of 36 – 52% of treatment naive patients. After dosing with BEOVU anti-brolucizumab antibodies were detected in at least one serum sample in 53 – 67% of patients.

Intraocular inflammation events were observed in 6% of patients with anti-brolucizumab antibodies detected compared with 1% in patients with no anti-brolucizumab antibodies detected during BEOVU treatment. The clinical significance of anti-brolucizumab antibodies on clinical effectiveness and safety is unclear at this time.

### **8.3 Less Common Clinical Trial Adverse Reactions**

Less common adverse drug reactions reported in <1% of the patients treated with BEOVU 6 mg in the HAWK and HARRIER studies are listed below.

**Eye disorders:** anterior chamber flare, anterior chamber inflammation, corneal oedema, iridocyclitis, vitreous haemorrhage, vitritis.

### **8.4 Abnormal Laboratory Findings: Hematologic, Clinical Chemistry and Other Quantitative Data**

There were no findings to suggest a relationship between BEOVU and the development of clinically significant abnormalities in the Phase III HAWK and HARRIER studies.

## **9 DRUG INTERACTIONS**

No drug interaction studies have been conducted.

## **10 ACTION AND CLINICAL PHARMACOLOGY**

### **10.1 Mechanism of Action**

Brolucizumab is a humanized vascular endothelial growth factor (VEGF) inhibitor that binds to VEGF-A isoforms (e.g. VEGF<sub>110</sub>, VEGF<sub>121</sub>, and VEGF<sub>165</sub>), thereby preventing binding of VEGF-A to its receptors VEGFR-1 and VEGFR-2. By inhibiting VEGF-A binding, brolucizumab suppresses endothelial cell proliferation in vitro and reduces neovascularization and vascular permeability.

### **10.2 Pharmacodynamics**

Neovascular (wet) age-related macular degeneration (AMD) is characterized by proliferation of abnormal blood vessels in the choroid (choroidal neovascularization (CNV)). Leakage of blood and fluid from CNV may cause retinal thickening or edema.

Reductions in central retinal subfield thickness (CST) were observed in wet AMD patients treated with BEOVU. In the HAWK and HARRIER studies, the mean change from baseline in CST (BEOVU vs. aflibercept) was: -161 vs. -134 microns (HAWK) and -174 vs. -134 microns (HARRIER) at Week 16; -173 vs. -144 microns (HAWK) and -194 vs. -144 microns (HARRIER) at Week 48; and -175 vs. -149 microns (HAWK) and -198 vs. -155 microns (HARRIER) at Week 96.

### 10.3 Pharmacokinetics

BEOVU is administered directly into the vitreous to exert local effects in the eye.

**Absorption/Distribution:** After a single intravitreal administration of 6 mg brolocizumab per eye to patients with nAMD, the geometric mean serum  $C_{max}$  of free brolocizumab was 49.0 ng/mL (range: 8.97 to 548 ng/mL) and was attained in 1 day post-dose.

Following the proposed IVT dose regimen, brolocizumab concentrations were generally near or below the quantitation limit (<0.5 ng/mL) approximately 4 weeks after dosing and no accumulation in serum was observed in most patients.

**Metabolism/Elimination:** No drug metabolism and excretion studies have been conducted. As a single-chain antibody fragment, free brolocizumab is expected to undergo elimination through metabolism via proteolysis and target-mediated disposition and/or passive renal excretion.

After a single intravitreal injection, brolocizumab was eliminated with estimated mean ( $\pm$  standard deviation) systemic half-life of 4.3 days ( $\pm$  2.2 days).

#### Special Populations and Conditions

**Pediatrics:** No studies have been performed to examine the pharmacokinetics of BEOVU in pediatric patients.

**Geriatrics:** No significant differences in systemic pharmacokinetics were observed based on age (50 years and above).

**Hepatic Insufficiency:** Brolocizumab has not been studied in patients with hepatic impairment.

**Renal Insufficiency:** Following intravitreal dose administration of BEOVU, the mean systemic clearance rates of brolocizumab was 15% and 30% lower in subjects with mild (50 to 79 mL/min (n=13)) or moderate (30 to 49 mL/min (n=3)) renal impairment, respectively, than in patients with normal renal function ( $\geq$ 80 mL/min (n=25)). However, the number of patients was too low to make definitive conclusions. No patients with severe (<30 mL/min) renal impairment were studied.

## 11 STORAGE, STABILITY AND DISPOSAL

### Pre-filled syringe

Store in the refrigerator (2°C to 8°C).

Do NOT freeze.

Prior to use, the unopened blister may be kept at room temperature (25°C) for up to 24 hours.

Keep the pre-filled syringe in its sealed blister and in the carton in order to protect from light.

Refer to pre-filled syringe for expiry date.

BEOVU must be kept out of reach and sight of children.



**Vial\***

Store in the refrigerator (2°C to 8°C).

Do NOT freeze.

Prior to use, the unopened vial may be kept at room temperature (25°C) for up to 24 hours. After opening the vial, proceed under aseptic conditions.

Keep the vial in the outer carton in order to protect from light.

Refer to vial for expiry date.

BEOVU must be kept out of reach and sight of children.

\*single-use vial not available in Canada

**12 SPECIAL HANDLING INSTRUCTIONS****Pre-filled syringe**

The solution should be inspected visually upon removal from the refrigerator and prior to administration. If particulates or cloudiness are visible, the pre-filled syringe must not be used and appropriate replacement procedures followed.

The pre-filled syringe is sterile and for single use only. Do not use if the packaging, or pre-filled syringe is damaged or expired.

Any unused product or waste material should be disposed of in accordance with local regulations.

**Vial\***

The solution should be inspected visually upon removal from the refrigerator and prior to administration. If particulates or cloudiness are visible, the vial must not be used and appropriate replacement procedures followed.

The contents of the vial and filter needle are sterile and for single use only. Do not use if the packaging, vial and/or filter needle are damaged or expired.

Any unused product or waste material should be disposed of in accordance with local regulations.

\*single-use vial not available in Canada

## PART II: SCIENTIFIC INFORMATION

### 13 PHARMACEUTICAL INFORMATION

#### Drug Substance

Proper name:	brolocizumab
Chemical name:	humanized monoclonal single-chain Fv (scFv) antibody fragment directed against human vascular endothelial growth factor (hVEGF).
Molecular formula and molecular mass:	$C_{1164}H_{1768}N_{310}O_{372}S_8$ 26 kDa
Structural formula:	Brolocizumab is a fusion protein of the variable regions of the light and heavy chains of an immunoglobulin, connected with a short linker peptide of 21 amino acids. The linker is rich in glycine for flexibility and serine for solubility. It retains the specificity of the original immunoglobulin, despite removal of the constant regions and the introduction of the linker.
Physicochemical properties:	Brolocizumab is a sterile, clear to slightly opalescent, colorless to slightly brownish-yellow and preservative-free aqueous solution. The pH of the aqueous solution of brolocizumab is in the range of 6.4 - 7.2.

#### Product Characteristics

Brolocizumab is humanized monoclonal single-chain Fv (scFv) antibody fragment that binds to human vascular endothelial growth factor (hVEGF)-A. Brolocizumab is produced in *Escherichia coli* cells by recombinant DNA technology.

### 14 CLINICAL TRIALS

#### 14.1 Trial Design and Study Demographics

The safety and efficacy of BEOVU were assessed in two randomized, multi-center, double-masked, active-controlled non-inferiority Phase III studies (HAWK and HARRIER) in patients with neovascular (wet) AMD. A total of 1,817 patients were randomized and treated in these studies (1,088 on BEOVU and 729 on aflibercept). Table 3 provides a summary of the trial design and patient demographics of the two studies.

**Table 3 - Summary of trial design and patient demographics for clinical trials in nAMD**

Study #	Trial design	Dosage, route of administration and duration	Study subjects (n)	Mean age (Range)	Sex
Study RTH258-C001 (HAWK)	Randomized, double-masked, multi-center, active-controlled non-inferiority study	BEOVU 3mg/50µl, intravitreal injection, 3xq4w+q12w/q8w BEOVU 6mg/50µl, intravitreal injection, 3xq4w+q12w/q8w Aflibercept 2mg/50µl, intravitreal injection, 3xq4w+q8w	BEOVU 3 mg: n=360 BEOVU 6 mg: n=361 Aflibercept 2 mg: n=361	76.6 (50-97 years)	Male: 43.4% Female: 56.6%
Study RTH258-C002 (HARRIER)	Randomized, double-masked, multi-center, active-controlled non-inferiority study	BEOVU 6mg/50µl, intravitreal injection, 3xq4w+q12w/q8w Aflibercept 2mg/50µl, intravitreal injection, 3xq4w+q8w	BEOVU 6 mg: n=372 Aflibercept 2 mg: n=371	75.2 (50-95 years)	Male: 42.9% Female: 57.1%

In HAWK, patients were randomized in a 1:1:1 ratio to the following dosing regimens:

- BEOVU 3 mg administered every 12 or 8 weeks (q12w/q8w) after the first 3 monthly doses,
- BEOVU 6 mg administered every 12 or 8 weeks (q12w/q8w) after the first 3 monthly doses,
- aflibercept 2 mg administered every 8 weeks (q8w) after the first 3 monthly doses.

In HARRIER, patients were randomized in a 1:1 ratio to the following dosing regimens:

- BEOVU 6 mg administered every 12 or 8 weeks (q12w/q8w) after the first 3 monthly doses,
- aflibercept 2 mg administered every 8 weeks (q8w) after the first 3 monthly doses.

In both studies, after three initial monthly doses (Week 0, 4, and 8), treating physicians decided whether to treat each individual patient on an every 8 week or 12 week dosing interval guided by visual and anatomical measures of disease activity. Disease activity was assessed at Week 16 and 20 and at each subsequent scheduled q12w treatment visit. Patients who showed disease activity (e.g. decreased visual acuity, increased central subfield thickness (CST), and/or presence of retinal fluids (IRF/SRF, sub-RPE)) at any of these visits were adjusted to a q8w treatment interval and remained on the 8 week dosing interval until the end of the study.

The primary efficacy endpoint for the studies was the change from baseline in Best Corrected Visual Acuity (BCVA) to Week 48 as measured by the Early Treatment Diabetic Retinopathy

Study (ETDRS) Letter Score with the primary objective to demonstrate non-inferiority of BEOVU vs. aflibercept using a non-inferiority margin of 4 letters.

## 14.2 Study Results

In both studies, BEOVU (administered in a q12w/q8w regimen) demonstrated non-inferior efficacy to aflibercept 2 mg (administered q8w) for the change from baseline in Best Corrected Visual Acuity (BCVA) to Week 48.

Detailed results of both studies at Week 48 are shown in Table 4 and Figure 1 below.

**Table 4 - Efficacy outcomes at Week 48 in Phase III - HAWK and HARRIER studies**

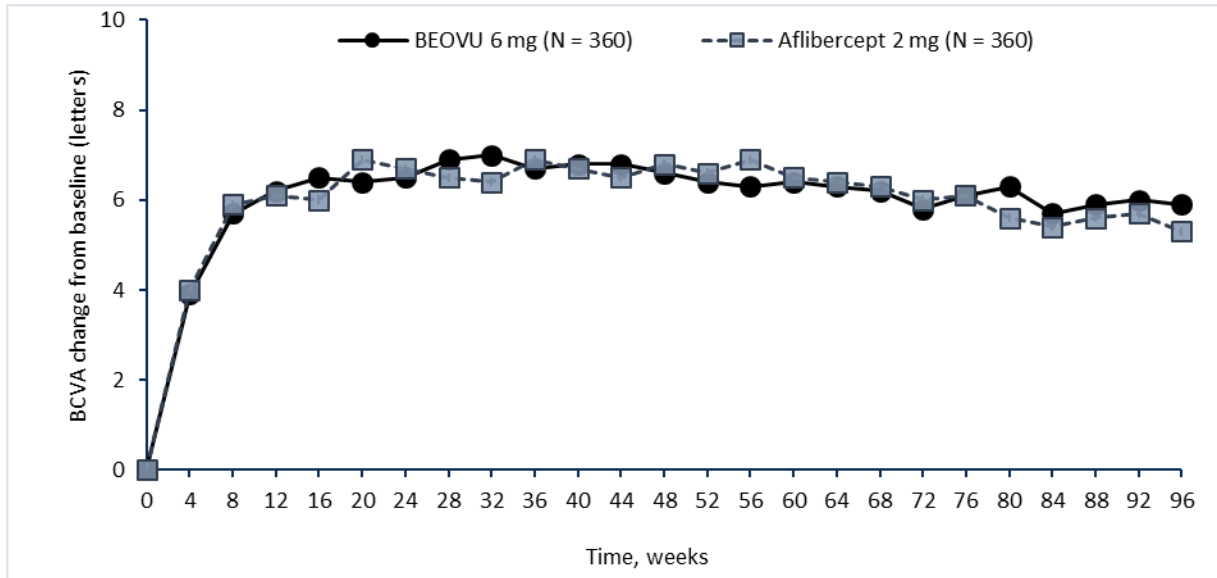
Efficacy outcome	At week	HAWK			HARRIER		
		BEOVU 6 mg (n=360)	Aflibercept 2 mg (n=360)	Difference (95% CI) brolocizumab – aflibercept	BEOVU 6 mg (n=370)	Aflibercept 2 mg (n=369)	Difference (95% CI) brolocizumab – aflibercept
Mean BCVA at Baseline	-	60.8 (SD=13.7)	60.0 (SD=13.9)	-	61.5 (SD=12.6)	60.8 (SD=12.9)	-
Mean (SE) change from baseline in BCVA (measured by ETDRS letters score)	48	6.6 (0.71)	6.8 (0.71)	-0.2 (-2.1, 1.8) P <0.0001 <sup>a)</sup>	6.9 (0.61)	7.6 (0.61)	-0.7 (-2.4, 1.0) P <0.0001 <sup>a)</sup>
% of patients who gained at least 15 letters of vision or BCVA of ≥84 letters at Week 48	48	33.6	25.4	8.2 (2.2, 15.0)	29.3	29.9	-0.6 (-7.1, 5.8)
% of patients who lost visual acuity (%) (≥15 letters of BCVA loss)	48	6.4	5.5	0.9 (-2.7, 4.3)	3.8	4.8	-1.0 (-3.9, 2.2)

*BCVA: Best Corrected Visual Acuity; ETDRS: Early Treatment Diabetic Retinopathy Study*  
*BCVA assessments after start of alternative anti-VEGF treatment in the study eye are censored and the last value prior to start of this alternative treatment is used in the analyses. Missing data are imputed using the last value prior to missing data.*  
<sup>a)</sup> *P-value referring to the non-inferiority hypothesis with a non-inferiority margin of 4.0 letters based on an ANOVA model with Baseline BCVA categories (≤55, 56-70, ≥71 letters), age categories (<75, ≥75 years) and treatment as fixed effect factors.*

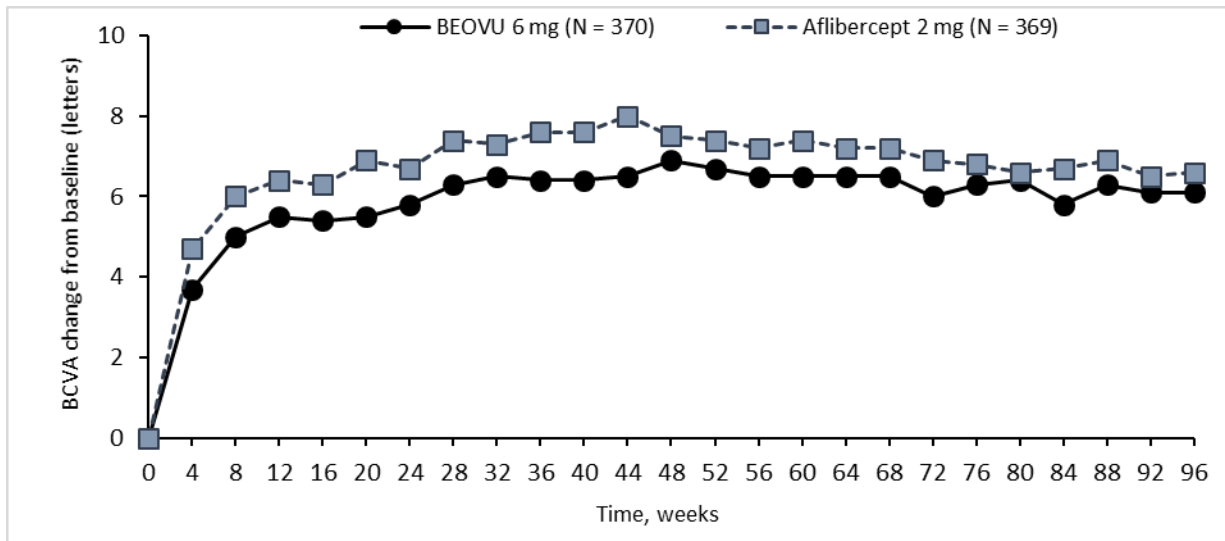
At week 96, the mean change from baseline in BCVA (measured by ETDRS letter score) in the HAWK and HARRIER studies was 5.9 and 6.1 for brolocizumab 6 mg and 5.3 and 6.6 for aflibercept, respectively. At week 96, the percentage of patients who gained at least 15 letters of vision or had BCVA of ≥ 84 letters in the HAWK and HARRIER studies was 34.2 and 29.1 for brolocizumab 6 mg and 27.0 and 31.5 for aflibercept, respectively. At week 96, the percentage of patients who lost visual acuity (%) (≥15 letters of BCVA loss) in the HAWK and HARRIER studies was 8.1 and 7.1 in brolocizumab 6 mg and 7.4 and 7.5 in aflibercept, respectively.

**Figure 1 - Mean change in visual acuity from baseline to Week 96 in HAWK and HARRIER studies**

**HAWK**



**HARRIER**



Through Week 48, 56% (HAWK) and 51% (HARRIER) of patients treated with BEOVU 6 mg remained on the q12w dosing interval. The proportion of patients who remained on the q12w dosing interval through Week 96 was 45% and 39% in HAWK and HARRIER, respectively. Among patients identified as eligible for q12w interval during the first 12 week interval, 85% (HAWK) and 82% (HARRIER) remained on the q12w dosing interval up to Week 48.

## **15 NON-CLINICAL TOXICOLOGY**

### **General Toxicology**

A 6-month repeat-dose toxicity study was conducted in cynomolgus monkeys (3 animals/sex/group) in which brolocizumab was administered to one eye by intravitreal injection at a dose of 0, 1, 3, or 6 mg/eye (50 µl) once every 4 weeks for 26 weeks. Evaluations included daily observations for morbidity and mortality, clinical observations (including abnormal respiration and behavior), body weight determinations, biomicroscopic and indirect ophthalmoscopic examinations, intraocular pressure measurements, electroretinograms, clinical pathology, toxicokinetic and anti-drug antibody analysis of the serum and vitreous, and macroscopic and microscopic examinations. Minimal transient intraocular inflammation was observed in all groups, including the control group, which were attributed to the injection procedure. However, an increase in the severity of intraocular inflammation was observed in a few animals administered brolocizumab (1 animal at 3 mg dose and 2 animals at 6 mg dose), but no ocular or systemic toxicity was observed.

The ocular and systemic no observed adverse effect level (NOAEL) with brolocizumab 6 mg per eye every 4 weeks provides a 2-fold margin of ocular safety (based on comparative ocular volume) for the recommended human dose. Systemic exposure was observed following intravitreal administration.

### **Carcinogenicity**

Studies have not been conducted to evaluate the carcinogenic potential of brolocizumab.

### **Genotoxicity**

Studies have not been conducted to evaluate the genotoxic potential of brolocizumab.

### **Reproductive and Developmental Toxicology**

Based on anti-VEGF mechanism of action, brolocizumab is regarded as potentially teratogenic and embryo-/fetotoxic.

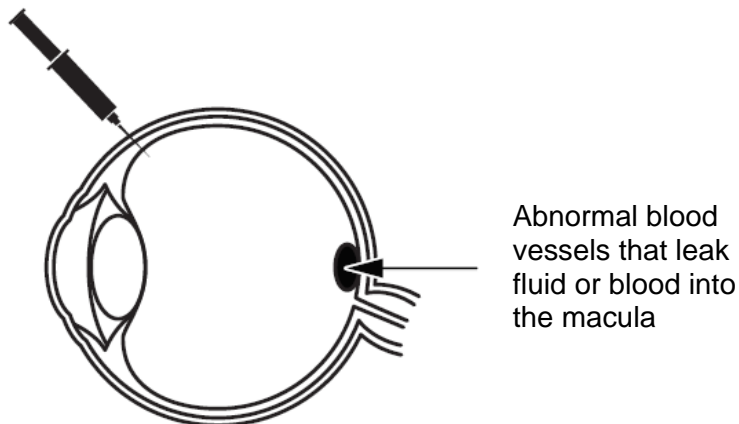
**READ THIS FOR SAFE AND EFFECTIVE USE OF YOUR MEDICINE**  
**PATIENT MEDICATION INFORMATION**

**PrBEOVU®**  
**brolocizumab injection**  
**Solution for intravitreal injection**

Read this carefully before you start taking **BEOVU®** and each time you get a refill. This leaflet is a summary and will not tell you everything about this drug. Talk to your healthcare professional about your medical condition and treatment and ask if there is any new information about **BEOVU**.

**What is BEOVU used for?**

- BEOVU is a medicine that is injected into the eye by your doctor to treat an eye disorder called neovascular (wet) age-related macular degeneration (AMD).
- BEOVU contains the active substance brolocizumab (bro-loo-siz-u-mab), which belongs to a group of medicines called anti-neovascularization agents (“anti-VEGF”, see below “How does BEOVU work”).
- BEOVU is used to treat wet AMD, which occurs when abnormal blood vessels form and grow underneath the macula. The macula is located at the back of the eye, and it is responsible for clear vision. These abnormal blood vessels may be weak and leak fluid or blood in the eye. This can interfere with the macula’s function, resulting in reduced vision.



**How does BEOVU work?**

A substance called vascular endothelial growth factor A (VEGF-A) causes the growth of abnormal blood vessels in the eye. By attaching to this substance, BEOVU (anti-VEGF-agent) reduces the growth of abnormal blood vessels, which reduces the leakage of fluid or blood in the eye.

**What are the ingredients in BEOVU?**

Medicinal ingredient: brolocizumab

Non-medicinal ingredients: polysorbate 80, sodium citrate, sucrose, water for injection

**BEOVU comes in the following dosage forms:**

Solution for intravitreal injection 6 mg / 0.05 mL in pre-filled syringe or vial\*

\*single-use vial not available in Canada

**Do NOT use BEOVU if you:**

- **Are allergic** (hypersensitive) to brolocizumab or any of the other ingredients in BEOVU.
- **Have** an active or suspected infection in or around the eye.
- **Experience** pain or redness in your eye.

If any of these apply to you, **tell your doctor. You should not be given BEOVU.**

**To help avoid side effects and ensure proper use, talk to your healthcare professional before you take BEOVU. Talk about any health conditions or problems you may have, including if you:**

- Have glaucoma (an eye condition usually caused by high pressure in the eye).
- Have a history of seeing flashes of light or floaters (dark floating spots) and if you have a sudden increase of size and number of floaters.
- Had surgery performed on your eyes within the previous four weeks.
- Have a surgery planned on your eye within the next four weeks.
- Have a prior history of eye conditions or eye treatments.

**Tell your doctor immediately** if you get any of these symptoms **after BEOVU is injected:**

- If you develop signs of a possible eye infection. (Ex. redness of the eye, eye pain, increased discomfort, worsening eye redness, blurred or decreased vision, increased number of small particles in your vision, increased sensitivity to light.)
- If you develop signs of a possible allergic reaction. (Ex. fast pulse, low blood pressure, sweating, allergic skin reactions such as rash, itching or stinging)

Furthermore it is important for you to know that:

- The safety and efficacy of administering BEOVU to both eyes at the same time has not been studied. Using BEOVU this way may lead to an increased risk of side effects.
- Injections with Beovu may cause an increase in eye pressure (intraocular pressure). This can occur in some patients within 30 minutes of the injection. Your doctor will monitor this after each injection.
- Your doctor will check whether you have other risk factors that may increase the chance of a tear or detachment of one of the layers at the back of the eye (retinal detachment or tear, and retinal pigment epithelial detachment or tear). In such cases BEOVU must be given with caution.

The use of substances similar to those in BEOVU, is potentially related to the risk of blood clots blocking blood vessels (arterial thromboembolic events). This may lead to heart attack or stroke. There could be a risk of such events following injection of BEOVU into the eye.

**Other warnings you should know about:**

**Children and adolescents (< 18 years)**

BEOVU is NOT used in children and adolescents, because wet AMD occurs only in adults.



### Older people (≥ 65 years)

BEOVU can be given to elderly people without adjusting the dose.

### Pregnancy and breast-feeding

Tell your doctor:

- If you are pregnant or think that you may be or are planning to have a baby. Your doctor will discuss with you whether BEOVU can be administered during your pregnancy.

You should not breast-feed your child:

- During BEOVU treatment; and
- For at least one month after the last injection when stopping treatment with BEOVU.

### Women of child-bearing potential

Women who could become pregnant must use an effective birth control:

- During BEOVU treatment; and
- For at least one month after the last injection when stopping treatment with BEOVU.

If you become pregnant or think you are pregnant, tell your healthcare professional right away.

### Driving and using machines

After your injection with BEOVU, you may experience some temporary vision problems (example - blurry vision). Do not drive or use machines as long as these last.

**Tell your healthcare professional about all the medicines you take, including any drugs, vitamins, minerals, natural supplements or alternative medicines.**

### How to take BEOVU:

A trained doctor will inject BEOVU into your eye.

### Usual dose:

The recommended dose is 6 mg of BEOVU (brolucizumab).

- You will be treated with one injection per month for the first three months.
- After that, you may get one injection every twelve weeks (3 months) or every eight weeks (2 months). Your doctor will determine your treatment interval based on the condition of your eye.

**For the first 3 months**



**1 injection per month**



**Then,**



**or**



**1 injection every 3 months or  
2 months as recommended  
by your doctor**

Once you begin receiving BEOVU, it is important to follow the treatment schedule recommended by your doctor. This could help you receive the full potential benefit of BEOVU.

### **How is BEOVU given**

BEOVU is given as an injection into your eye (intravitreal injection).

Before the injection, your doctor will:

- Clean your eye with a disinfectant eyewash to prevent infection.
- Give you an eye drop (local anesthetic) to numb the eye, to reduce or prevent any pain you might have with the injection.

### **How long does BEOVU treatment continue**

Wet AMD is a chronic disease. Your doctor will check if the treatment is having the desired effect during your regularly scheduled visits. Your doctor may also check your eyes during a visit without an injection. **If you have questions about how long you will receive BEOVU, talk to your doctor.**

### **Before stopping BEOVU treatment**

Speak with your doctor before stopping treatment. Stopping treatment may increase your risk of vision loss and reverse the visual improvement you may have experienced.

If you have any further questions on the use of this medicine, **ask your doctor.**

### **Overdose:**

If you think you have been given too much BEOVU, contact your healthcare professional, hospital emergency department or regional poison control centre immediately, even if there are no symptoms.
--

### **Missed Dose:**

Missing an injection may reverse the visual improvement you may have experienced. If you miss an appointment for BEOVU treatment, contact your doctor as soon as possible. Your doctor will decide when you should be given your next dose.

### **What are possible side effects from using BEOVU?**

These are not all the possible side effects you may feel when taking BEOVU. The side effects associated with the administration of BEOVU are either due to the medicine itself or the injection procedure. If you experience any side effects not listed here, contact your healthcare professional.

**If these side effects become severe, please tell your doctor.**

**Common:** *may affect up to 1 in every 10 people*

- inflammation of the middle layer of tissue of the eye wall (uveitis)
- detachment of one of the layers at the back of the eye (vitreous detachment)
- tear of the retina that is located in the back of the eye (retinal tear)
- reduced sharpness of vision (visual acuity reduced)
- bleeding in the retina (retinal haemorrhage)
- inflammation of the iris (iritis)
- clouding of the eye lens (cataract)
- bleeding from small blood vessels in the white of the eye (conjunctival haemorrhage)
- moving spots in your vision (vitreous floaters)
- eye pain
- increase in eye pressure (intraocular pressure increase)
- redness in the white of the eye (conjunctivitis)
- tear of one of the layers in the back of the eye (retinal pigment epithelial tear)
- blurred or unclear vision
- scratched cornea, damage to the clear layer of the eyeball that covers the iris (corneal abrasion)
- damage to the clear layer of the eyeball that covers the iris (punctate keratitis)
- allergic reactions (hypersensitivity)

**Uncommon:** *may affect up to 1 in every 100 people.*

- severe inflammation inside the eye (endophthalmitis)
- blindness
- sudden vision loss due to blockage of an artery in the eye (retinal artery occlusion)
- detachment of one of the layers in the back of the eye (retinal detachment)
- redness of the eye (conjunctival hyperaemia)
- increased tear production (lacrimation increased)
- abnormal feeling in the eye
- detachment of one of the layers in the back of the eye (detachment of retinal pigment epithelium)
- inflammation of the gel that fills the center of the eyeball (vitritis)
- inflammation of the front of the eye (anterior chamber inflammation or flare)
- inflammation in the iris and its adjacent tissue in the eye (iridocyclitis)
- swelling of the cornea, the clear layer of the eyeball (corneal oedema)
- bleeding in the eye (vitreous haemorrhage)

<b>Serious side effects and what to do about them</b>			
Symptom / effect	Talk to your healthcare professional		Stop taking drug and get immediate medical help
	Only if severe	In all cases	
<b>UNCOMMON</b> Inflammations or infections (redness of the eye, eye pain, increased discomfort, blurred or decreased vision, increased number of small particles in		✓	

<b>Serious side effects and what to do about them</b>			
Symptom / effect	Talk to your healthcare professional		Stop taking drug and get immediate medical help
	Only if severe	In all cases	
your vision, increased sensitivity to light)			
Tear or detachment of one of the layers at the back of the eye (a sudden decrease or change in vision, flashing lights, black spots)		✓	
Cataract (clouded, blurred or dim vision)		✓	
Increased pressure in the eye		✓	
Allergic reactions (fast pulse, low blood pressure, sweating, allergic skin reactions such as rash, itching or stinging)		✓	
Signs of stroke (weakness or paralysis of limbs or face, difficulty speaking or understanding, sudden blurring or loss of vision)*		✓	

\* There is a potential risk of Arterial Thromboembolic Events (ATEs), including stroke, following injection of BEOVU into the eye.

If you have a troublesome symptom or side effect that is not listed here or becomes bad enough to interfere with your daily activities, talk to your healthcare professional.

<p><b>Reporting Side Effects</b></p> <p>You can report any suspected side effects associated with the use of health products to Health Canada by:</p> <ul style="list-style-type: none"> <li>• Visiting the Web page on Adverse Reaction Reporting (<a href="https://www.canada.ca/en/health-canada/services/drugs-health-products/medeffect-canada/adverse-reaction-reporting.html">https://www.canada.ca/en/health-canada/services/drugs-health-products/medeffect-canada/adverse-reaction-reporting.html</a>) for information on how to report online, by mail or by fax; or</li> <li>• Calling toll-free at 1-866-234-2345.</li> </ul> <p><i>NOTE: Contact your health professional if you need information about how to manage your side effects. The Canada Vigilance Program does not provide medical advice.</i></p>
--

**Storage:**

The information on how to store BEOVU is meant for your doctor. Your doctor will be storing, handling, and injecting BEOVU.

### Pre-filled syringe

- Store in a refrigerator (2°C to 8°C).
- Do NOT freeze.
- Prior to use, the unopened blister may be kept at room temperature (25°C) for up to 24 hours.
- Keep the pre-filled syringe in its sealed blister and in the carton in order to protect from light.
- Do not use if the packaging, or pre-filled syringe is damaged or expired.

Keep out of reach and sight of children.

### Vial\*

- Store in a refrigerator (2°C to 8°C).
- Do NOT freeze.
- Prior to use, the unopened vial may be kept at room temperature (25°C) for up to 24 hours.
- Keep the vial in the outer carton in order to protect from light.
- Do not use if the packaging, vial and/or filter needle are damaged or expired.

Keep out of reach and sight of children.

\*single-use vial not available in Canada

### **If you want more information about BEOVU:**

- Talk to your healthcare professional
- Find the full product monograph that is prepared for healthcare professionals and includes this Patient Medication Information by visiting the Health Canada website (<https://www.canada.ca/en/health-canada.html>); the manufacturer's website ([www.novartis.ca](http://www.novartis.ca)), or by calling 1-800-363-8883.

This leaflet was prepared by Novartis Pharmaceuticals Canada Inc.

Last Revised: March 12, 2020

BEOVU is a registered trademark